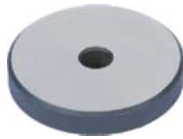


BLOQUES PATRÓN DE DUREZA



Rockwell



Vickers



Brinell



Micro-Vickers



Leeb



Shore

ESPECIFICACIONES

| Código | Tipo | Dureza |
|------------|---------------|-------------------------------------------------------------------------|
| ISH-BHRC1 | Rockwell C | 25-35HRC |
| ISH-BHRC2 | | 40-50HRC |
| ISH-BHRC3 | | 55-65HRC |
| ISH-BHRB | Rockwell B | 75-95HRB |
| ISH-BHRA | Rockwell A | 70-85HRA |
| ISH-BHV5A | Vickers | 150-250HV5 |
| ISH-BHV5B | | 400-500HV5 |
| ISH-BHV5C | | 650-750HV5 |
| ISH-BHV10A | | 400-500HV10 |
| ISH-BHV10B | | 650-750HV10 |
| ISH-BHV30 | | 400-500HV30 |
| ISH-BHB25A | Brinell | 75-125HBW 2.5/62.5 |
| ISH-BHB25B | | 150-250HBW 2.5/187.5 |
| ISH-BHB5A | | 75-125HBW 5/250 |
| ISH-BHB5B | | 150-250HBW 5/750 |
| ISH-BHB10A | | 75-125HBW 10/1000 |
| ISH-BHB10B | | 150-250HBW 10/3000 |
| ISH-BHV005 | Micro-Vickers | 200-300HV0.05 |
| ISH-BHV01A | | 200-300HV0.1 |
| ISH-BHV01B | | 400-500HV0.1 |
| ISH-BHV02A | | 400-500HV0.2 |
| ISH-BHV02B | | 700-800HV0.2 |
| ISH-BHV05 | | 700-800HV0.5 |
| ISH-BHV1 | | 700-800HV1 |
| ISH-BHLD | | Leeb |
| ISH-BHLG | 550-630HLG | |
| ISH-BSA | Shore A | 7pcs/set: 30-39HA, 40-49HA, 50-59HA, 60-69HA, 70-79HA, 80-89HA, 90-99HA |